



SELECTRA



SELECTRA
www.selectrasrl.it

REGISTER CONTROL EYE TOUCH



REGISTER CONTROL EYE TOUCH

- Longitudinal and transversal color register control for rotogravure, flexographic, typographic and web offset printing presses
- Digital measurement control with independent micro-processors for each unit
- Automatic recognition of register marks
- Independent fiber optics sensors for each printing station
- Simultaneous control of print elements with fully automatic presetting feature
- Fully Automatic start-up
- Windows based software

ADVANTAGES

- Significant waste reduction due to automatic mark recognition and ability to achieve registration from start up with print cylinders in any position
- Increased productivity by reducing down time
- Works on any substrate
- Optimizes product quality
- Minimizes waste during start up, re-starts, press acceleration/deceleration and also during reel changes.
- Fast Return-On-Investment

INDUSTRY APPLICATIONS

- Packaging
- Newspaper
- Commercial publication
- Wallpaper
- Continuous forms
- Labels
- Wood grain
- Aluminium



EYE TOUCH



OPERATION OF EYE TOUCH

The **EYE TOUCH** register control meets the highest quality standards and satisfies all the requirements of the most demanding printers. The register control automatically corrects printing mis-alignment. This improves the quality of the print jobs and increases the printer's profit.

The system is designed to facilitate fast production changeovers. This has many benefits including better effective use of press time and resources thereby decreasing the impact on the environment.

The **EYE TOUCH** analyzes the printed image generated by the register marks, which are printed alongside the actual work. By scanning these marks, the computer compares the actual location with the desired location for each printed color. The computer then generates appropriate correction signals to correct for any misregistration in the print. The control uses programmable PID algorithms which can immediately eliminate errors due to splicing, reel changes and variations in speed or tension.

The **EYE TOUCH** is characterized by its independent white led fiber optics sensors. Thanks to the sophisticated algorithm, the system works flawlessly even under abnormal conditions such as dust on the detectors, non-optimal positioning of the scanning head, faded or very pale register marks, reflections and even ink spots.



Programming, configuration and adjustments are extremely easy for the operator. Setup and operation is implemented through an industrial PC with LCD touch-screen monitor. The configuration of each printing head is independent of the others.



Register deviation

■ CORRECTION MOTORS

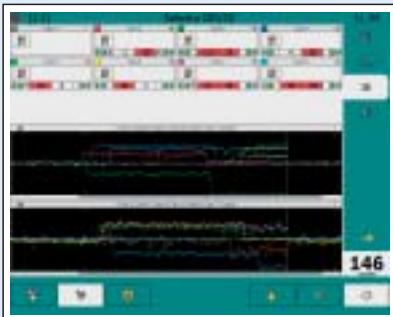
- SLO-SYN
- DC with variable speed
- AC with variable speed
- Brushless



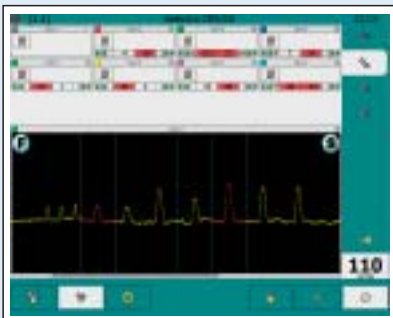
Explosion proof encoder

■ REGISTER MARKS

The marks act as references for the register control. Correct alignment of the register marks results in perfect registration of the print.



Error Histogram



Digital oscilloscope



Register marks setting



■ TECHNICAL SPECIFICATIONS

Operation Speed	from 5 m/min
Max. correctable error	360°
Sensitivity	0,01 mm
Error threshold	Settable
Min working speed	Programmable
Mark Recognition	Automatic
Pre-setting	Fully Automatic



Preset screen



CUT-OFF CONTROLS



WEB INSPECTION SYSTEMS



VISCOSITY CONTROLS



WEB GUIDES

Agente - Dealer



ITALY:

Via delle Brigole, 4
23877 **Paderno d'Adda** (Lecco)

tel:
+39 039 513012

fax:
+39 039 512084

web:
www.selectrasrl.it

e-mail:
info@selectrasrl.it